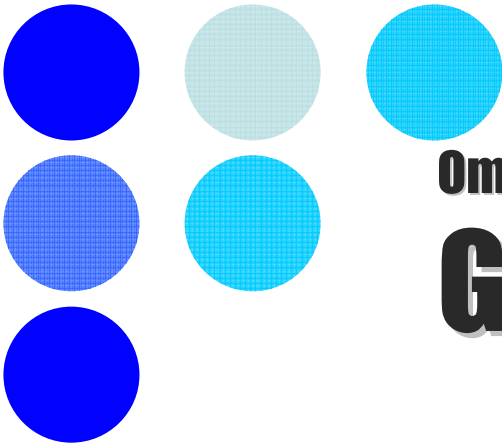
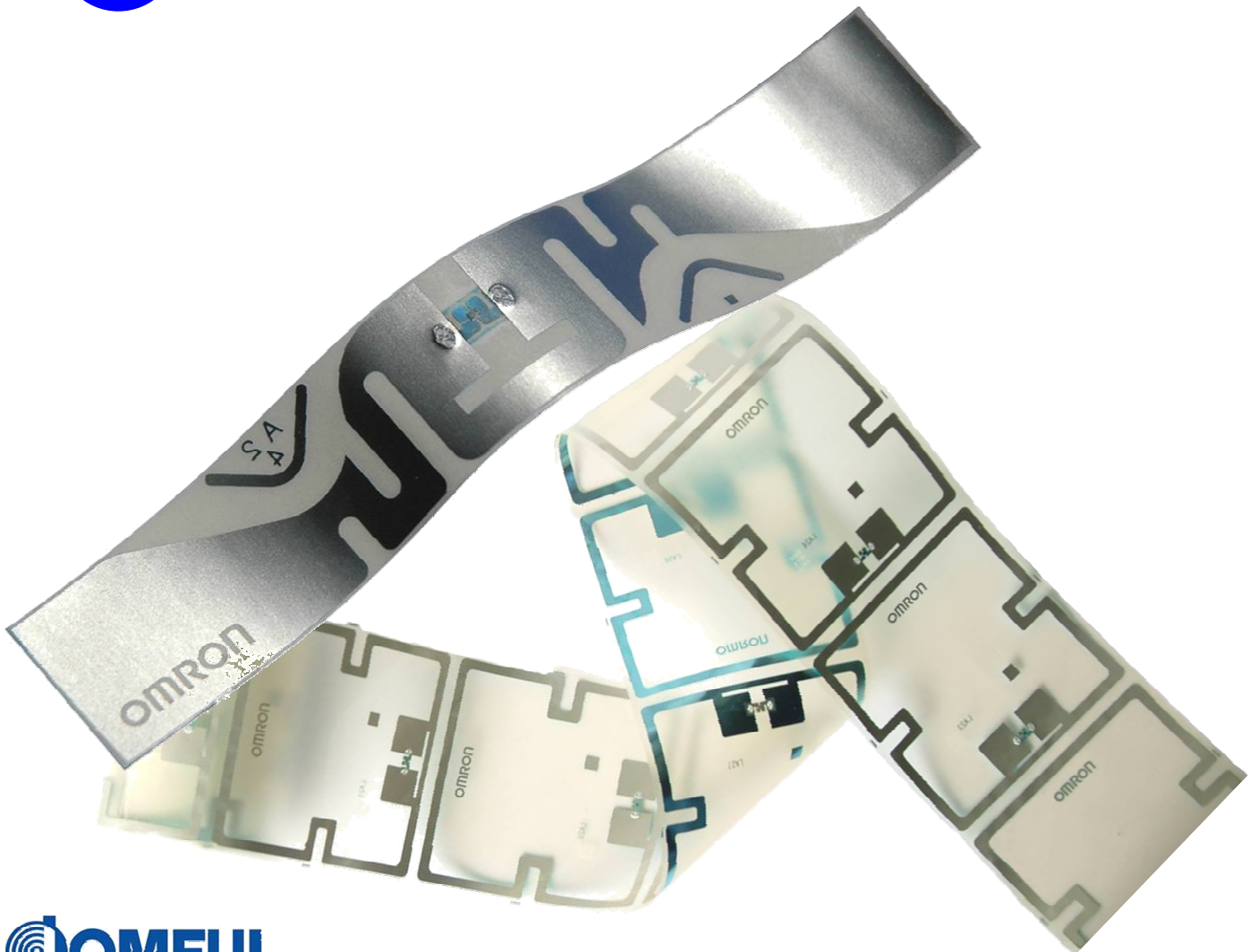


OMRON

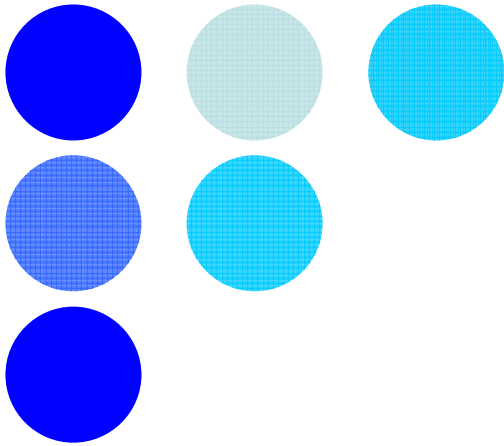


Omron V750 Series

Gen2 Global Inlays





JOMFUL is Omron's own patented technology used to manufacture inlays. The term JOMFUL is derived from :**J**oint of **m**etal with **f**ilm by **u**ltrasonic welding. This is the manufacturing process used to join the IC chip to the antenna, producing the strongest bond as compared to other conventional methods. This technology delivers high yield rates, durability, with an extremely high level of quality and reliability.



Specification

Omron's Gen2 Global Inlays can be used in 860 to 960MHz frequencies. This interoperability, along with Omron's very high quality durable inlays, contributes to reduce global logistic cost.

		
Model Number	Gen2 Wave V750-D22M01-IM	Gen2 Loop V750-D22M02-IM
Antenna Size	3.70 x 0.63 inch (94.0mm x 16.0 mm)	2.76 x 2.68 inch (70.0mm x 68.0mm)
Chip	EPCglobal Class1 Generation2 / Impinj Monza	
Memory	MVN (EPC Area 96bit)	
Operation Frequency	860-960Mhz	
Antenna Material	Aluminum	
Operating Temperature	-20 to 55° C(-4 to 131° F) (with no icing, no condensation)	
Application Examples	General Purpose/Case Level Tagging	For RF Unfriendly Material, Metallic/High Moisture Content, Pallet

Omron RFID
 1920 Thoreau Drive, Suite 165
 Schaumburg IL 60173
 Phone: 888-303-RFID(7343)